



Transtar A/C Supply Profile

A Modern HVAC Supply Company

CONCORD[®]

ALLIED[™]
Air Enterprises
A LENNOX Company

ALLIED[™]
Commercial



Content Overview

About Us	03
Store Locations	04
Line Card	05
Business Accounts	06-07
Services - <i>Territory Manager</i>	08
New Dealer Program	09
Residential Equipment: <i>Good-Better-Best</i>	10
Commercial Equipment	11
Equipment Spec Sheets	12-30
System Matchup Tables	31-39



About Us

In 1982, Transtar A/C Supply, Inc. was founded by Thomas Abraham with the goal of offering contractors reliable, cost-efficient parts and equipment, along with unparalleled customer service. Over the past 40 years, Transtar has become a leading wholesale distributor and exporter in Texas for air conditioning and heating equipment and parts.

Starting in a small, single location, Transtar has now expanded to seven convenient Houston-Area locations, encompassing over 160,000 square feet of warehouse facilities, and stocking over \$4 million in inventory. The company prides itself on its ability to build strong relationships with contractors by offering the highest level of customer service, competitive pricing, and top-notch air conditioning and heating equipment, parts, and supplies. Transtar is committed to earning contractor loyalty through its unwavering dedication to quality and service.



Locations

I-10 East



Airline



Stafford



Gulf Freeway



Brenham



FM 1960



Alvin



Line Card

CONCORD[®]

ALLIED[™]
Commercial

ASPEN
Dependable. Lasting. Indoor-Comfort

ComfortStar[®]
Air Conditioning & Heating Products

Robertshaw

PRO

White
Rodgers

DIVERSITECH[®]

RECTORSEAL

ADMP
Quality Duct Seal Products Since 1962

METAL-FAB^{INC.}

KLEIN TOOLS

Packard
Supplying HVACR solutions with your needs in mind.

TITAN PRO

M&M

YJ YELLOW JACKET

SE

Malco

SOUTHWEST METAL

Solutions Through Advanced Technology
MAINSTREAM ENGINEERING

ATCO RUBBER PRODUCTS, INC.
Flexible Duct Systems

Hydro Balance

DITEK
Surge Protection

Air-King
TOTAL VENTILATION SOLUTIONS

Supco
THE RIGHT CHOICE

UNIWELD

ICM
CONTROLS

FORANE
ARKEMA

Lau

HARDCAST
DUCT SEALANTS & INSULATION ADHESIVES

cps 5-2-1
COMPRESSOR SAVER

C&D VALVE

Fieldpiece

Shurtape
TRUE TO YOUR WORK

SP Sensible Products[®]

Business Accounts: Credit Accounts

We offer both Credit and COD Cash accounts at Transtar. Customers are encouraged to fill out the necessary application to open their preferred account type. We recommend opening a Credit account for ultimate convenience.

How It Works

- Instantly eligible for Tier 2 Customer Pricing (*Tier 1 reserved for Dealers*)
- **No hard credit pulls or reporting to credit bureaus**
- Receive a detailed monthly statement from Transtar's Accounting Manager
- Can pay statements with a credit card, cash, or check
- Easily reconcile and organize all of your monthly business purchases
- Flexibility to choose to pay-as-you-go at the counter, or pay later once you receive your monthly statement
- All Transtar purchase history is easily available
- Eligible to participate in special Transtar promotions and giveaway opportunities



Ask one of Transtar's friendly branch associates for an account application
and credit card authorization form today!

Business Accounts: COD Accounts



How It Works

- Instantly eligible for Tier 3 Customer Pricing
- Pay-as-you-go at the counter – **All invoices must be paid in full at point-of-sale**
- All Transtar purchase history is easily available
- Eligible to participate in special Transtar promotions and giveaway opportunities

Credit Cards on File

- Along with opening an account, both Credit and COD customers have the option to fill out a credit card authorization form to leave a credit card on file for easy processing.
- This adds convenience to easily authorize payments remotely, speed up point-of-sale transactions in-store, or to pay monthly Credit Account invoices.
- Cards are stored in a secure database and your information is only available to account administrators at Transtar's corporate staff.

**Ask one of Transtar's friendly branch associates for an account application
and credit card authorization form today!**

My Mission as Territory Manager

*"To provide the highest quality customer service and attention to detail to fulfill all of your needs.
Creating value and ensuring efficiency to save you both time and money.
My ultimate goal is to partner with you to help grow your business."*

Services Provided

Fast turn-around time on quotes
Coordinate delivery directly to your job site
Facilitating Invoices for pick-up at your preferred location
Always available directly by phone or in person
Comprehensive knowledge of products
Extensive information on dealer programs, consumer financing, and labor warranties

Eric Savage - Territory Manager



For questions or further
information contact:

Eric Savage,
Territory Manager
esavage@transtaracsupply.com

New Dealer Program

- ▶ Easy to enroll with no fees
- ▶ Earn a \$500 rebate after purchasing 10 Motor Bearing Units (MBU)
- ▶ \$50 off each MBU after the 10th unit purchased
- ▶ Access to consumer financing and labor warranties

How It Works

- Dealers get \$50 towards every motor bearing unit (MBU) purchased.
- Dealers have 24 months to reach 100 MBUs
- **Extended Earning Period:** Dealers who exceed 100 units in the first 12 months unlock unlimited earnings on purchases within 24 months of enrollment!

Residential Equipment

GOOD

Up to 17 SEER



- **4AC17L model condenser:**
 - Heavy-duty, single-stage.
- **80G1UH model gas furnace:**
 - Constant torque furnace with high-efficiency blower drive.
- **BCE5C model electric air handler:**
 - Powerful single-stage motor.

BETTER

Up to 17.5 SEER



- **4AC17L model condenser:**
 - Heavy-duty, single-stage.
- **96G2UH model gas furnace:**
 - Variable speed motor starts up slowly and quietly accelerates to keep temperatures controlled.
- **BCE5E model electric air handler:**
 - Constant-torque blower motor produces even temperatures.

BEST

Up to 20 SEER



- **4HP18V model heat pump:**
 - Variable speed inverter technology with heavy-duty compressor sound blanket, and many other features!
- **Choice of constant torque or variable speed gas furnace.**
- **Choice of constant torque or variable speed electric air handler.**

Commercial Equipment

Z-SERIES™

- The Z-Series™ delivers both value and flexibility, with proven performance.
- Available in 3- to 12.5-ton gas/electric, electric/electric, and up to 10-ton heat pump models
- Z-Series rooftop units are compatible with many replacement jobs and fit one of today's most popular curb sizes.
- Direct carrier replacement
- No curve adaptor necessary for replacement

K-SERIES™

- K-Series™ rooftop units are known for precise, dependable performance.
- 5-25 Ton units available
- The K-Series is flexible and customizable, making it an excellent choice for virtually any commercial application



Commercial Split Systems Available in 6-20 Ton Options

LYNX™ 4HP18V SPLIT HEAT PUMP SYSTEM

HIGH-EFFICIENCY UP TO 19SEER2 & 8.5 HSPF2

PRODUCT SPECIFICATIONS

INSTALLED BY THE BEST

- Installer training available through authorized distributors and on Allied Air Academy

COMPRESSOR

- Inverter-driven compressor for true variable capacity operation, precision environmental control, and exceptional energy savings
- R410A refrigerant
- Grommet-mounted compressor for quiet operation
- Heavy-duty compressor sound blanket for quiet operation
- Internally protected against high temperature motor overload conditions

CABINET

- Full metal louvered construction to protect the coil
- Individual metal louvered panels remove easily for coil cleaning and service
- Specialized corner-mounted controls for easy service
- Baked polyester paint finished over galvanized steel for maximum durability
- Removable PVC coated wire fan discharge grill
- External gauge ports for easy service
- Removable service panel for internal access
- Compliant with Florida Building Code 2020

COILS

- Omniguard® coil corrosion protection with all-aluminum tube-and-fin coil design
- Lanced fins for maximum heat transfer
- Factory tested for leakproof construction
- Raised coil prevents debris from impeding airflow and helps prevent ice build-up

DESIGN

- Designed for installation with a standard 24V thermostat and non-communicating equipment
- Offers five total operating modes, three in cooling and two for heating, to fine-tune the unit's performance to the application and consumer's needs
- Clean-sweep defrost provides a more thorough defrost, reducing the number of cycles during heating operation
- Designed to perform in temperatures from -15°F to 125°F

COMPONENTS

- 45-degree offset gauge ports are positioned for quick installation and easy service
- Variable speed condenser fan motor
- Swept wing fan blade for quiet operation (5 Ton)
- Factory-installed crankcase heater
- Factory-installed TXV for excellent refrigeration control
- Factory-installed high and low pressure switches
- Thread-on pressure switches for simple, quick service
- Fan orifice for smoother airflow and sound level reduction
- QuickLink™ technology uses proprietary algorithms and specialized sensors to monitor liquid and suction temperatures and pressures for precision system control in true variable speed operation
- Shipped factory charged for 15 feet of line set
- Discharge muffler for quiet operation
- Demand defrost for increased energy efficiency

• Quiet Shift™ capable to reduce noise during defrost

WARRANTY

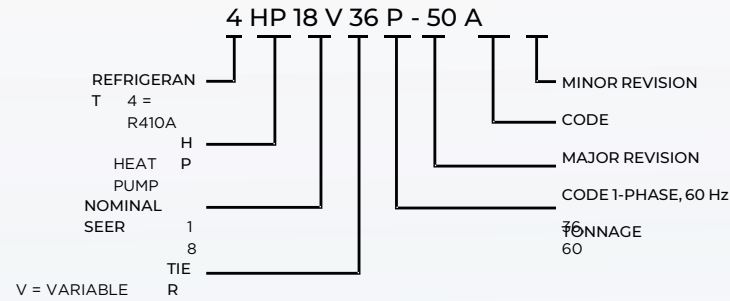
- 5-year limited warranty
- 10-year limited extended warranty available on all parts and compressor

*Warranty provides for a total of 10 years of limited warranty coverage (Standard 5-year limited parts warranty plus an additional 5-year limited extended parts warranty). Warranty must be registered online within 60 days of installation to qualify for 10-year coverage. Unregistered equipment defaults to 5-year coverage. Lifetime limited heat exchanger warranty applies to registered equipment only (Standard 20 years with no online registration). See full warranty at www.alliedair.com for terms, conditions and exclusions.



LYNX™ 4HP18V SPLIT HEAT PUMP SYSTEM

MODEL NUMBER GUIDE



ELECTRICAL AND PHYSICAL DATA

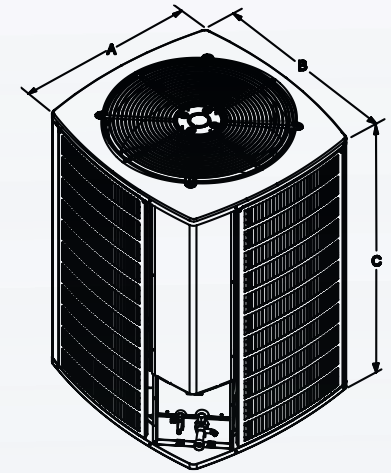
Model	Voltage/Hz/Phase	Voltage Range	Min. Circuit Amp.	Max. Over Current Device (amps)	Compressor		Outdoor Fan Motor		Shipping Weight (lbs.)
					Input Amps	Full Load (amps)	Rated HP	Nom. RPM	
4HP18V36P-50	208-230/60/1	197-253	21.9	35	15.3	2.8	1/3	VAR. SPD	215
4HP18V60P-50	208-230/60/1	197-253	33.7	50	24.7	2.8	1/3	VAR. SPD	272

Note:
 Weights listed are unit weights with packaging
 * Factory charged for 15 feet of line set; adjust per installation instructions

DIMENSIONS (IN.)

Model No.	Dimensions (inch)		
	A - Width	B - Depth	C - Height
4HP18V36P-50	29.38	31.25	33.75
4HP18V60P-50	29.38	31.25	43.75

Note:
 Dimensions listed are unit sizes w/o packaging



4AC17L SPLIT SYSTEM AIR CONDITIONER UP TO 17 SEER

PRODUCT SPECIFICATIONS

COMPRESSOR

- High-efficiency scroll compressor
- R410A refrigerant
- Internally protected against high temperature motor overload conditions
- Heavy-duty compressor sound blanket for quiet operation (optional accessory)

CABINET

- Full metal louvered construction to protect the coil/hail protection
- Individual louver panels; 4 screws to remove for ease of coil cleaning and service
- Corner-mounted controls for easy service
- Baked polyester paint finished over galvanized steel for maximum durability
- 45-degree offset valves for easy service

COILS

- Omniguard™ total corrosion protection technology designed coil
- Enhanced tube-and-fin coil design featuring MHT™ Technology
- Lanced fins for maximum heat transfer
- Every coil factory tested for leakproof construction
- Raised coil prevents debris from impeding airflow

COMPONENTS

- Factory installed high and low pressure switches
- Thread-on pressure switches with Schrader core for simple, quick replacement
- Filter drier shipped loose for installation flexibility
- Fan orifice for smoother airflow and sound level reduction
- Charged for 15 feet of line set

WARRANTY

10 year limited warranty on compressor
10 year limited warranty on all parts, extended warranty available*

**Warranty provides for a total of 10 years of limited warranty coverage (Standard 5-year limited parts warranty plus an additional 5-year limited extended parts warranty). Warranty must be registered online within 60 days of installation to qualify for 10-year coverage. Unregistered equipment defaults to 5-year coverage. See full warranty at www.alliedair.com for terms, conditions and exclusions.*

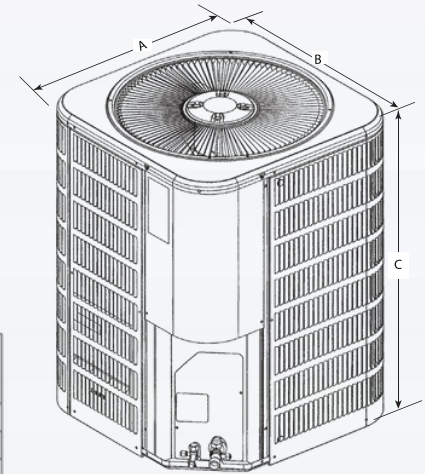
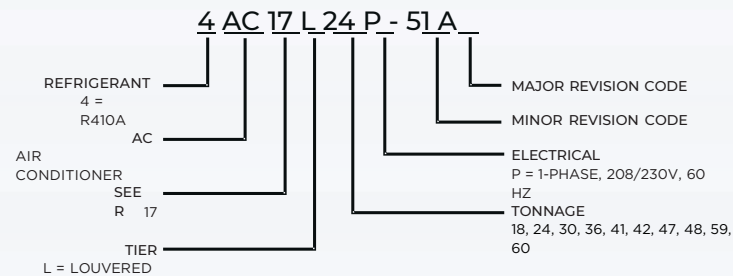


NOTE:
For the latest ratings, please see
www.alliedratings.com or
www.AHRIdirectory.org



4AC17L SPLIT SYSTEM AIR CONDITIONER UP TO 17 SEER

MODEL NUMBER GUIDE



PHYSICAL AND ELECTRICAL DATA

Model	Voltage/Hz/Phase	Voltage Range	Min. Circuit Amp.	Max. Over Current Device (amps)	Compressor		Outdoor Fan Motor		
					Rated Load (amps)	Locked Rotor (amps)	Full Load (amps)	Rated HP	Nom. RPM
4AC17L18P	208-230/60/1	197-253	12.0	15	8.8	42.6	1.0	1/6	825
4AC17L24P	208-230/60/1	197-253	15.4	20	11.7	59.5	0.7	1/8	1075
4AC17L30P	208-230/60/1	197-253	18.4	25	14.1	71.3	0.7	1/8	1075
4AC17L36P	208-230/60/1	197-253	17.4	30	13.1	83.1	1.0	1/6	825
4AC17L41P	208-230/60/1	197-253	21.9	35	15.4	92.1	2.6	1/3	825
4AC17L42P	208-230/60/1	197-253	24.6	35	18.6	110.0	1.4	1/4	825
4AC17L47P	208-230/60/1	197-253	27.5	35	19.9	110.0	2.6	1/3	825
4AC17L48P	208-230/60/1	197-253	33.0	50	25.0	120.0	1.7	1/4	825
4AC17L59P	208-230/60/1	197-253	35.5	50	26.3	140.6	2.6	1/3	825
4AC17L60P	208-230/60/1	197-253	31.3	50	23.9	124.5	1.4	1/4	825

UNIT DIMENSIONS (IN.)

Model	Dimensions (inch)			Shipping Weight (Lbs.)
	A - Width	B - Depth	C - Height	
4AC17L18P	28.25	28.25	29.25	155
4AC17L24P	28.25	28.25	37.25	170
4AC17L30P	28.25	28.25	29.25	180
4AC17L36P	28.25	28.25	37.25	200
4AC17L41P	32.25	32.25	33.25	225
4AC17L42P	32.25	32.25	33.25	225
4AC17L47P	32.25	32.25	33.25	225
4AC17L48P	28.25	28.25	43.25	230
4AC17L59P	32.25	32.25	43.25	260
4AC17L60P	32.25	32.25	43.25	260

96G2V TWO-STAGE VARIABLE SPEED GAS FURNACE

PRODUCT SPECIFICATIONS

CONFIGURATIONS

- Upflow / Horizontal
- Downflow

VENTING

- 2-speed induced draft motor with stainless steel shaft, steel ball bearings and fan cooled for long life
- Vent materials for Canadian applications must comply with ULC S636
- Certified for direct vent (2-pipe) or non-direct (1-pipe) applications
- Direct vent refers to a combustion air supply intake pipe installed in conjunction with flue gas vent pipe.

INSTALLATION FEATURES

- Left or right gas and electric entry
- Zero step horizontal conversion
- Removable floor base (upflow/horizontal units) for bottom return air
- All models comply with California's South Coast Air Quality Management district Low NOx requirements

HEAT EXCHANGER DESIGN

- Aluminized steel primary heat exchanger with crimped non-welded construction
- AL29-4C Stainless steel secondary heat exchanger
- Non-welded crimped S-curve primary heat exchanger design for maximum durability

BURNERS

- Aluminized steel in shot burners for smooth ignition
- Isolated burner enclosure for quiet operation

CABINET CONSTRUCTION

- Compact 33" height
- Standardized widths for easy coil fit
- Unitized construction for cabinet integrity
- Heat exchanger compartment is insulated to increase efficiency and reduce sound levels
- Baked on pre painted steel cabinet finish

AIR DELIVERY SYSTEM

- Efficient ECM variable speed blower motor
- Motor features "soft start" and "soft stop" for quiet operation
- Active and passive dehumidification feature
- Easily removable slide-out blower design
- Dynamically balanced blower wheel with resilient motor mounts for smooth and quiet operation

CONTROLS

- Two stage gas valve
- Integrated ignition and fan control
- System Sentry™ control retains last five (5) fault codes with push button memory recall, regardless of power interruption
- Hot surface ignition system uses silicon nitride ignitor
- Control features 120 volt electronic air cleaner and humidifier terminals
- Control circuit is fuse protected
- Color coded control wiring
- Compatible with single or two stage thermostats for heating.
- Two stage thermostat is recommended when installed with two stage cooling unit.

WARRANTY

10-year limited parts warranty / lifetime heat exchanger warranty available. See limited warranty document for details.

California Only

*If installed in South Coast Air Quality Management District (SCAQMD) only: This furnace does not meet the SCAQMD Rule 1111 NOx emission limit (14 ng/J), and thus is subject to a mitigation fee of up to \$450. This furnace is not eligible for the Clean Air Furnace Rebate Program: www.CleanAirFurnaceRebate.com.
If installed in San Joaquin Valley Air Pollution Control District (SJVAPCD) only: This furnace does not meet the SJVAPCD Rule 4905 NOx emission limit (14 ng/J), and thus is subject to a mitigation fee of up to \$450.*



96G2V TWO-STAGE VARIABLE SPEED GAS FURNACE

MODEL NUMBER GUIDE

PHYSICAL AND ELECTRICAL DATA

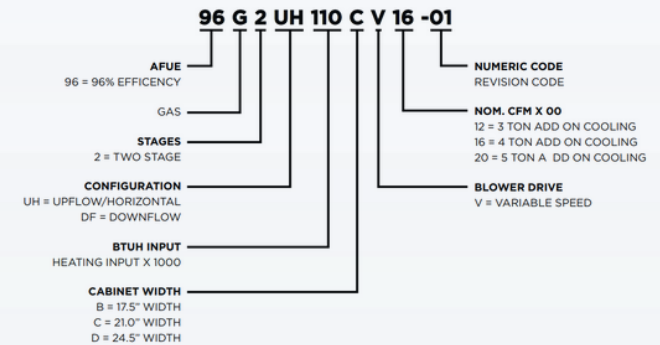
	MODEL	1ST STAGE		2ND STAGE		AFUE (ICUS)	NOM. COOLING CAPACITY (TONS)	GAS INLET (IN.)	VOLTS/ HZ/ PHASE	MIN. TIME DELAY BREAKER OR FUSE	NOMINAL F.L.A.	TRANS. (V.A.)	APPROX. WEIGHT (LBS.)
		INPUT (BTUH)	OUTPUT (BTUH)	INPUT (BTUH)	OUTPUT (BTUH)								
UPFLOW/HORIZONTAL	96G2UH045BV12	29,000	28,000	44,000	42,000	96.0	3	1/2	120-60-1	15	7.7	40	130
	96G2UH070BV12	43,000	41,000	66,000	62,000	96.0	3	1/2	120-60-1	15	7.7	40	138
	96G2UH090CV12	57,000	55,000	88,000	84,000	96.0	3	1/2	120-60-1	15	7.7	40	154
	96G2UH090CV20	57,000	55,000	88,000	85,000	96.0	5	1/2	120-60-1	20	12.8	40	166
	96G2UH110CV20	72,000	70,000	110,000	105,000	96.0	4	1/2	120-60-1	15	12.8	40	173
	96G2UH135DV20	88,000	84,000	132,000	126,000	96.0	5	1/2	120-60-1	20	12.8	40	188
DOWNFLOW	96G2DF070BV16	43,000	42,000	66,000	64,000	96.0	4	1/2	120-60-1	15	10.1	40	136
	96G2DF090CV20	57,000	56,000	88,000	85,000	96.0	5	1/2	120-60-1	20	12.8	40	164
	96G2DF110CV20	72,000	70,000	110,000	106,000	96.0	5	1/2	120-60-1	20	12.8	40	176

Note: For vent length and clearances to combustibles, please reference installation instructions.

FILTER REQUIREMENT DATA

Airflow Descriptor	Disposable Filters	Cleanable Filters
	Minimum Area (sq. in.)	Minimum Area (sq.in.)
12	576	288
16	768	384
20	960	480

- The Airflow Descriptor is the two digits following the "B", "C", or "D" in the model number; e.g. "20" is the Airflow Descriptor.
- Areas shown for permanent filters are based on filters rated at 600 feet per minute face velocity.

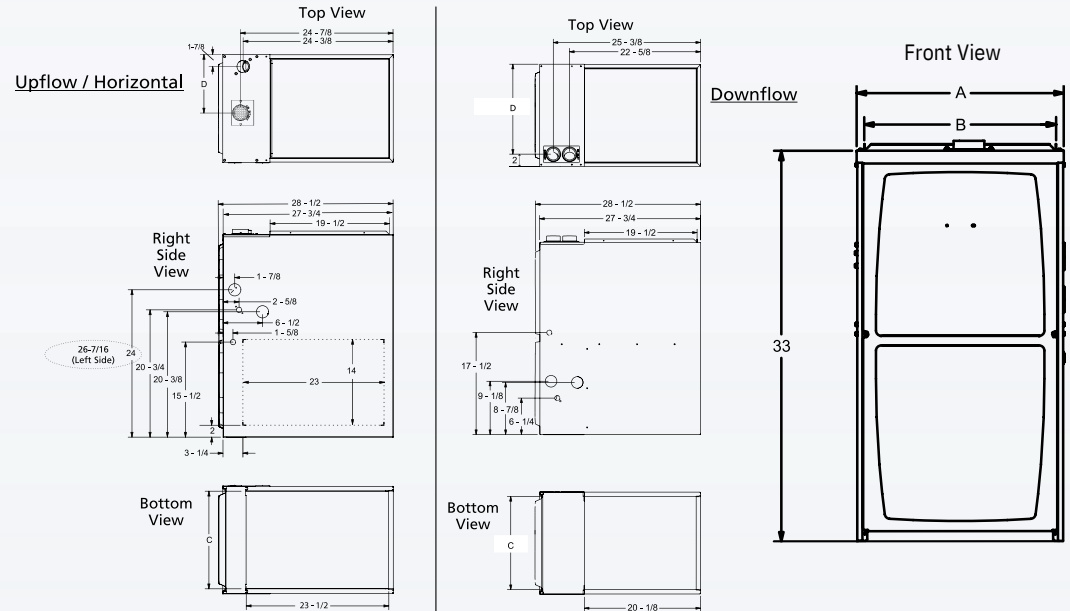


96G2V TWO-STAGE VARIABLE SPEED GAS FURNACE

MODEL NUMBER GUIDE

DIMENSIONS (IN.)

	MODEL	A	B	C	D
UPFLOW/HORIZONTAL	96G2UH045BV12	17-1/2	16-3/8	16	7-5/8
	96G2UH070BV12	17-1/2	16-3/8	16	7-5/8
	96G2UH090CV12	21	19-7/8	19-1/2	9-3/8
	96G2UH090CV20	21	19-7/8	19-1/2	9-3/8
	96G2UH110CV20	21	19-7/8	19-1/2	9-3/8
	96G2UH135DV20	24-1/2	23-3/8	23	11-1/8
DOWNFLOW	96G2DF070BV16	17-1/2	16-3/8	16	15-1/2
	96G2DF090CV20	21	19-7/8	19-1/2	19
	96G2DF110CV20	21	19-7/8	19-1/2	19



80G1 GAS FURNACE SINGLE STAGE

PRODUCT SPECIFICATIONS

CONFIGURATIONS

- Upflow / Horizontal
- Downflow

HEAT EXCHANGER DESIGN

- Crimped no-weld aluminized clamshell heat exchanger construction

CABINET DESIGN

- Compact 33" height
- Standardized widths for easy coil fit

AIR DELIVERY SYSTEM

- Multi-speed PSC blower motor
- Easily removable slide out blower design

CONTROLS

- Single stage gas valve
- Self diagnostics saving last 5 fault codes regardless of power interruption

VENTING

- Rotatable draft inducer for venting flexibility

INSTALLATION FEATURES

- Left or right utility connections
- "L" designated models comply with California's
- South Coast Air Quality Management district Low NOx requirements
- Removable floor base for bottom return air
- Zero step horizontal conversion

WARRANTY

10-Year limited parts warranty / lifetime heat exchanger warranty available. See limited warranty document for details.

Note: Not Sold In Canada

California Only

If installed in South Coast Air Quality Management District (SCAQMD) only: This furnace does not meet the SCAQMD Rule 1111 NOx emission limit (14 ng/L), and thus is subject to a mitigation fee of up to \$450. This furnace is not eligible for the Clean Air Furnace Rebate Program: www.CleanAirFurnaceRebate.com. If installed in San Joaquin Valley Air Pollution Control District (SJVAPCD) only: This furnace does not meet the SJVAPCD Rule 4905 NOx emission limit (14 ng/L), and thus is subject to a mitigation fee of up to \$450.



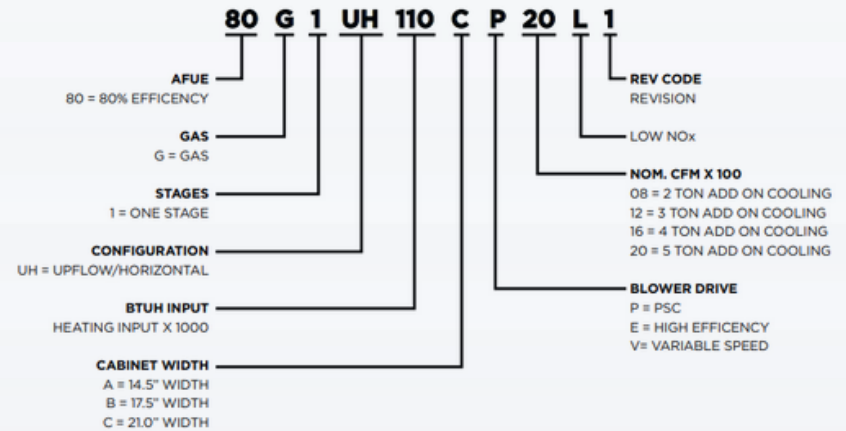
80G1 GAS FURNACE SINGLE STAGE

MODEL NUMBER GUIDE

PHYSICAL AND ELECTRICAL DATA

	Model	Input (Btuh)	Output (Btuh)	AFUE (IC5) %	Nom. Cooling Capacity	Gas Inlet (in.)	Volts/Hz/Phase	Max. Time Delay Breaker or Fuse	Nominal F.L.A.	Trans. (V.A.)	Approx. Shipping Weight (lbs.)
UPFLOW / HORIZONTAL	80GLUH045AP12	44,000	35,000	80.0%	2 - 3	1/2	120-60-1	15	6.1	40	110
	80GLUH070AP08	66,000	54,000	80.0%	1.5 - 2	1/2	120-60-1	15	3.1	40	114
	80GLUH070AP12	66,000	54,000	80.0%	2 - 3	1/2	120-60-1	15	6.1	40	119
	80GLUH090BP12	88,000	71,000	80.0%	2 - 3	1/2	120-60-1	15	6.1	40	131
	80GLUH090BP16	88,000	71,000	80.0%	3 - 4	1/2	120-60-1	15	8.2	40	183
	80GLUH110CP12	110,000	88,000	80.0%	2 - 3	1/2	120-60-1	15	6.1	40	144
	80GLUH110CP16	110,000	89,000	80.0%	3 - 4	1/2	120-60-1	15	8.2	40	151
	80GLUH110CP20	110,000	89,000	80.0%	4 - 5	1/2	120-60-1	15	10	40	161
	80GLUH115DP20	132,000	107,000	80.0%	4 - 5	1/2	120-60-1	15	10	40	174
	80GLUH045AP12L	44,000	35,000	80.0%	2 - 3	1/2	120-60-1	15	6.1	40	110
80GLUH070AP12L	66,000	54,000	80.0%	2 - 3	1/2	120-60-1	15	6.1	40	119	
80GLUH090BP16L	88,000	71,000	80.0%	3 - 4	1/2	120-60-1	15	8.2	40	138	
80GLUH110CP20L	110,000	89,000	80.0%	4 - 5	1/2	120-60-1	15	10	40	161	
DOWNFLOW	80G1DF 045 AP12	44,000	35,200	80.0%	2 - 3	1/2	120-60-1	15	6.1	40	112
	80G1DF 070 AP12	66,000	52,800	80.0%	2 - 3	1/2	120-60-1	15	6.1	40	121
	80G1DF 090 BP16	88,000	70,400	80.0%	3 - 4	1/2	120-60-1	15	8.2	40	140
	80G1DF 110 CP20	110,000	88,000	80.0%	4 - 5	1/2	120-60-1	15	10	40	163

Note: For vent length and clearances to combustibles, please reference installation instructions.

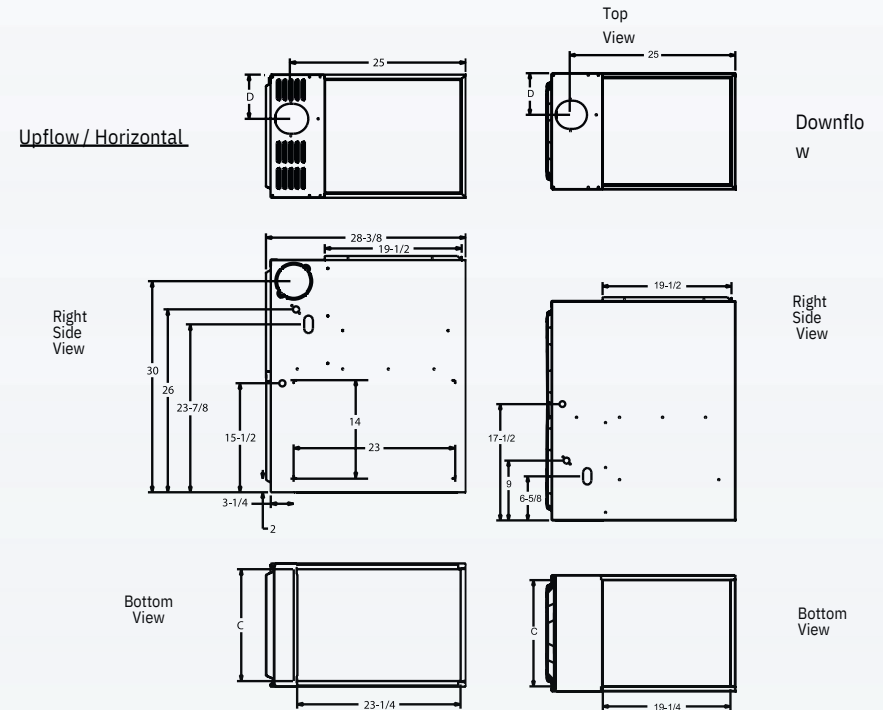
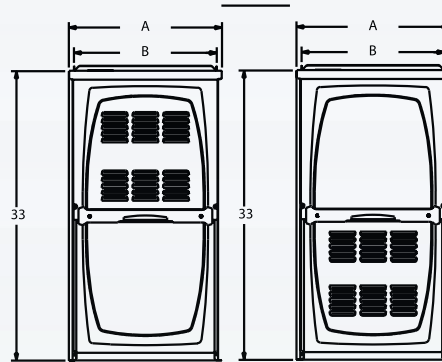


80G1 GAS FURNACE SINGLE STAGE

MODEL NUMBER GUIDE

DIMENSIONS (IN.)

	Model	A	B	C	D
UPFLOW / HORIZONTAL	80GIUH045AP12	14-1/2	13-3/8	13	4-3/4
	80GIUH070AP08	14-1/2	13-3/8	13	4-3/4
	80GIUH070AP12	14-1/2	13-3/8	13	4-3/4
	80GIUH090BP12	17-1/2	16-3/8	16	6-1/4
	80GIUH090BP16	17-1/2	16-3/8	16	6-1/4
	80GIUH110CP12	21	19-3/8	19-1/2	8
	80GIUH110CP16	21	19-3/8	19-1/2	8
	80GIUH110CP20	21	19-3/8	19-1/2	8
	80GIUH135DP20	24-1/2	23-3/8	23	9-3/4
	80GIUH045AP12L	14-1/2	13-3/8	13	4-3/4
80GIUH070AP12L	14-1/2	13-3/8	13	4-3/4	
80GIUH090BP16L	17-1/2	16-3/8	16	6-1/4	
80GIUH110CP20L	21	19-3/8	19-1/2	8	
DOWNFLOW	80GIDF 045 AP12	14-1/2	13-3/8	13	4-3/4
	80GIDF 070 AP12	14-1/2	13-3/8	13	4-3/4
	80GIDF 090 BP16	17-1/2	16-3/8	16	6-1/4
	80GIDF 110 CP20	21	19-7/8	19-1/2	8



BCE5V COMPACT AIR HANDLER

PRODUCT SPECIFICATIONS

APPLICATION

- 1 1/2 – 5 ton systems
- Sequenced for demand management
- External access to heater circuit breakers

INSTALLATION

- 1 piece design
- Smaller profile for tight application areas
- Multi-position – Factory ready for up-flow, downflow, and horizontal left/right applications
- Approved for installation in manufactured housing and mobile homes

CABINET

- Foil-faced insulation for enhanced indoor air quality
- Double hemmed technology for increased structural rigidity
- Improved gasketing on doors to prevent air leaks
- Filter rack with thumb screws for easy access and removal
- Polymer plugs on drain locations for easy installation
- Baked polyester paint finished over galvanized steel for maximum durability
- High-strength, UV and heat resistant polymer drain pan designed for corrosion resistance
- Antimicrobial polymer drain pan built to resist mold and mildew growth
- 2% or less air leakage

COILS

- Omniguard™ total corrosion protection technology designed coil
- Enhanced tube-and-fin coil design featuring MHT™ Technology
- Lanced fins for maximum heat transfer
- Factory leak tested and pre-charged with nitrogen holding charge

COMPONENTS

- Variable speed blower motor (constant air flow)
- Standard transformer and blower relay
- Field installed 5 – 20kW electric heat kits with easy plug connections
- Built-in indoor time delay for increased efficiency
- Sleeves on distributor tubing to protect tubes

WARRANTY

10 year limited warranty on all parts, extended warranty available*

**Warranty provides for a total of 10 years of limited warranty coverage (Standard 5-year limited parts warranty plus an additional 5-year limited extended parts warranty). Warranty must be registered online within 60 days of installation to qualify for 10-year coverage. Unregistered equipment defaults to 5-year coverage. See full warranty at www.alliedair.com for terms, conditions, and exclusions.*



BCE5V COMPACT AIR HANDLER

MODEL NUMBER GUIDE

PHYSICAL

Model	Volts/Hz/Phase	Max. Elec. Heat Available (kW)	Transformer Size & Type	Filter Size (in.)	Refrigerant Connection (IDS)		Installed TXV Size	Weight (lbs.)
					Suction (in.)	Liquid (in.)		
BCE5V18	208-230/60/1	7.5	40 VA Class 2	15 x 20 x 1	3/4	3/8	H4TXV01	109
BCE5V24	208-230/60/1	10	40 VA Class 2	15 x 20 x 1	3/4	3/8	H4TXV01	127
BCE5V30	208-230/60/1	15	40 VA Class 2	15 x 20 x 1	3/4	3/8	H4TXV01	133
BCE5V36	208-230/60/1	15	40 VA Class 2	18 x 20 x 1	7/8	3/8	H4TXV02	163
BCE5V42	208-230/60/1	15	40 VA Class 2	18 x 20 x 1	7/8	3/8	H4TXV02	168
BCE5V48	208-230/60/1	20	40 VA Class 2	18 x 20 x 1	7/8	3/8	H4TXV02	186
BCE5V60	208-230/60/1	20	40 VA Class 2	18 x 20 x 1	7/8	3/8	H4TXV03	186

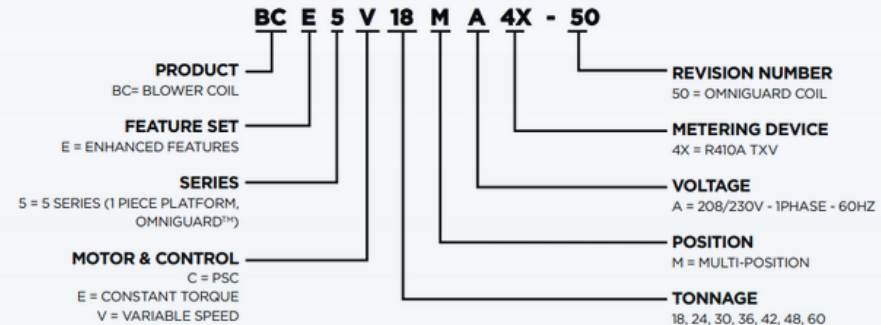
INSTALLATION CLEARANCES WITH ELECTRIC HEAT

Cabinet	0 in. (0 mm)
To Plenum	0 in. (0mm)
To Outlet Duct within 3 ft. (914mm)	0 in. (0 mm)
Floor	0 in. (0 mm) See Note #1
Service / Maintenance	See Note #2

¹ Units installed on combustible floors in the downflow position with electric heat require optional downflow combustible flooring base.

² Front service access - 24 in. (610 mm) minimum.

Note - If cabinet depth is more than 24 in. (610mm), allow a minimum of the cabinet depth plus 2 in. (51 mm).



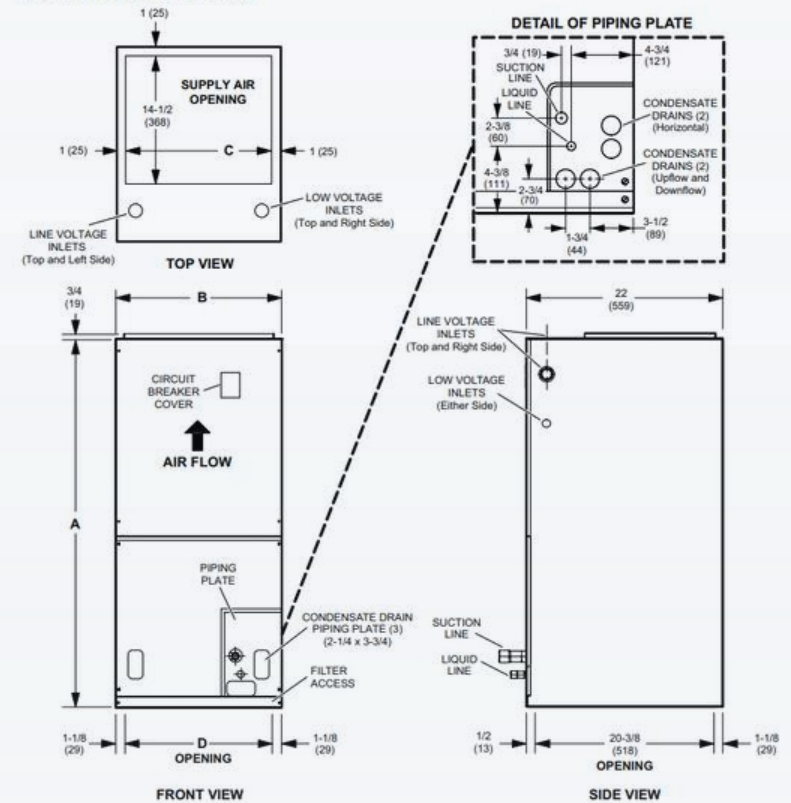
BCE5V COMPACT AIR HANDLER

MODEL NUMBER GUIDE

Dimension	18		24		30		36-42		48		60	
	in.	mm	in.	mm	in.	mm	in.	mm	in.	mm	in.	mm
A	43.5	1105	45.5	1156	47	1194	53.63	1362	55	1397	59.75	1518
B	18.5	470	18.5	470	18.5	470	21.5	546	21.5	546	21.5	546
C	16.5	419	16.5	419	16.5	419	19.5	495	19.5	495	19.5	495
D	16.25	413	16.25	413	16.25	413	19.25	489	19.25	489	19.25	489

All specifications and illustrations subject to change without notice and without incurring obligations.

UNIT DIMENSIONS - IN. (MM)



BCE5E COMPACT AIR HANDLER

PRODUCT SPECIFICATIONS

APPLICATION

- 1 1/2 – 5 ton systems
- Sequenced for demand management
- External access to heater circuit breakers

INSTALLATION

- 1 piece design
- Smaller profile for tight application areas
- Multiposition – Factory ready for upflow, downflow, and horizontal left/right applications
- Approved for installation in manufactured housing and mobile homes

CABINET

- Foil-faced insulation for enhanced indoor air quality
- Double hemmed technology for increased structural rigidity
- Improved gasketing on doors to prevent air leaks
- Filter rack with thumb screws for easy access and removal
- Polymer plugs on drain locations for easy installation
- Baked polyester paint finished over galvanized steel for maximum durability
- High-strength, UV and heat resistant polymer drain pan designed for corrosion resistance
- Antimicrobial polymer drain pan built to resist mold and mildew growth
- 2% or less air leakage

COILS

- Omniguard™ total corrosion protection technology designed coil
- Enhanced tube-and-fin coil design featuring MHT™ Technology
- Lanced fins for maximum heat transfer
- Factory leak tested and pre-charged with nitrogen holding charge

COMPONENTS

- Efficient PSC blower motors (4 and 5 ton units utilize constant torque motor)
- Standard transformer and blower relay
- Field installed 5 – 20kW electric heat kits with easy plug connections
- Blower time delay for increased efficiency
- Sleeves on distributor tubing to protect tubes

WARRANTY

10 year limited warranty on all parts, extended warranty available*

*Warranty provides for a total of 10 years of limited warranty coverage (Standard 5-year limited parts warranty plus an additional 5-year limited extended parts warranty). Warranty must be registered online within 60 days of installation to qualify for 10-year coverage. Unregistered equipment defaults to 5-year coverage. See full warranty at www.alliedair.com for terms, conditions, and exclusions.



 OMNIGUARD



BCE5E COMPACT AIR HANDLER

MODEL NUMBER GUIDE

PHYSICAL

Model	Volts/Hz/Phase	Max. Elec. Heat (kW)	Transformer Size & Type	Filter Size (in.)	Refrigerant Connection		Installed TXV Size	Weight (lbs.)
					Suction (in.)	Liquid (in.)		
BCE5E24	208-230/60/1	10	40 VA Class 2	15 x 20	3/4	3/8	H4TXV01	127
BCE5E30	208-230/60/1	15	40 VA Class 2	15 x 20	3/4	3/8	H4TXV01	133
BCE5E36	208-230/60/1	15	40 VA Class 2	18 x 20	7/8	3/8	H4TXV02	163
BCE5E42	208-230/60/1	15	40 VA Class 2	18 x 20	7/8	3/8	H4TXV02	168
BCE5E48	208-230/60/1	20	40 VA Class 2	18 x 20	7/8	3/8	H4TXV02	186
BCE5E60	208-230/60/1	20	40 VA Class 2	18 x 20	7/8	3/8	H4TXV03	186

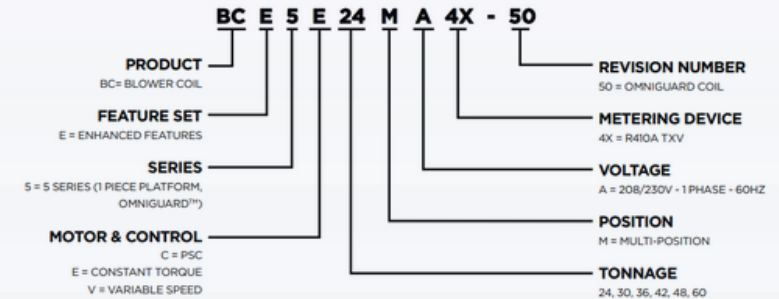
INSTALLATION CLEARANCES WITH ELECTRIC HEAT

Cabinet	0 in. (0 mm)
To Plenum	0 in. (0mm)
To Outlet Duct within 3 ft. (914mm)	0 in. (0 mm)
Floor	0 in. (0 mm) See Note #1
Service / Maintenance	See Note #2

1 Units installed on combustible floors in the downflow position with electric heat require optional downflow combustible flooring base.

2 Front service access - 24 in. (610 mm) minimum.

Note - If cabinet depth is more than 24 in. (610mm), allow a minimum of the cabinet depth plus 2 in. (51 mm).

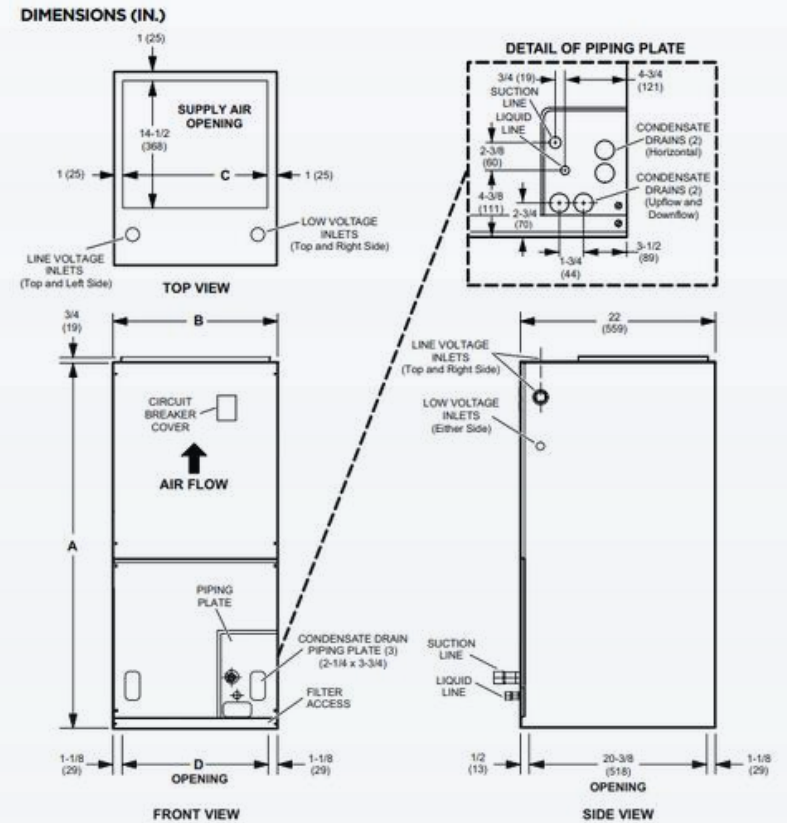


BCE5E COMPACT AIR HANDLER

MODEL NUMBER GUIDE

Dimension	24		30		36-42		48		60	
	in.	mm	in.	mm	in.	mm	in.	mm	in.	mm
A	45.5	1156	47	1194	53.63	1362	55	1397	59.75	1518
B	18.5	470	18.5	470	21.5	546	21.5	546	21.5	546
C	16.5	419	16.5	419	19.5	495	19.5	495	19.5	495
D	16.25	413	16.25	413	19.25	489	19.25	489	19.25	489

All specifications and illustrations subject to change without notice and without incurring obligations.



BCE5C COMPACT AIR HANDLER

PRODUCT SPECIFICATIONS

APPLICATION

- 1 1/2 – 5 ton systems
- Sequenced for demand management
- External access to heater circuit breakers

INSTALLATION

- 1 piece design
- Smaller profile for tight application areas
- Multiposition – Factory ready for upflow, downflow, and horizontal left/right applications
- Approved for installation in manufactured housing and mobile homes

CABINET

- Foil-faced insulation for enhanced indoor air quality
- Double hemmed technology for increased structural rigidity
- Improved gasketing on doors to prevent air leaks
- Filter rack with thumb screws for easy access and removal
- Polymer plugs on drain locations for easy installation
- Baked polyester paint finished over galvanized steel for maximum durability
- High-strength, UV and heat resistant polymer drain pan designed for corrosion resistance
- Antimicrobial polymer drain pan built to resist mold and mildew growth
- 2% or less air leakage

COMPONENTS

- Efficient PSC blower motors (4 and 5 ton units utilize constant torque motor)
- Standard transformer and blower relay
- Field installed 5 – 20kW electric heat kits with easy plug connections
- Blower time delay for increased efficiency
- Sleeves on distributor tubing to protect tubes

COILS

- Omniguard™ total corrosion protection technology designed coil
- Enhanced tube-and-fin coil design featuring MHT™ Technology
- Lanced fins for maximum heat transfer
- Factory leak tested and pre-charged with nitrogen holding charge

WARRANTY

10 year limited warranty on all parts, extended warranty available*

**Warranty provides for a total of 10 years of limited warranty coverage (Standard 5-year limited parts warranty plus an additional 5-year limited extended parts warranty). Warranty must be registered online within 60 days of installation to qualify for 10-year coverage. Unregistered equipment defaults to 5-year coverage. See full warranty at www.alliedair.com for terms, conditions, and exclusions.*

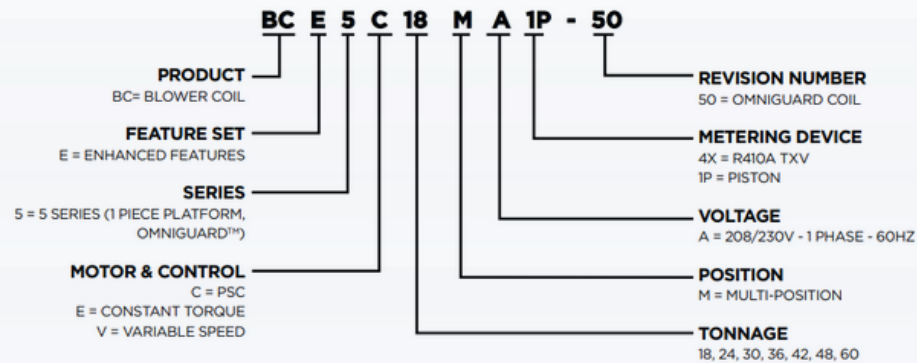


 OMNIGUARD



BCE5C COMPACT AIR HANDLER

MODEL NUMBER GUIDE



PHYSICAL

Model	Volts/Hz/Phase	Max. Elec. Heat Available (kW)	Transformer Size & Type	Filter Size (in.)	Refrigerant Connection (IDS)		Weight (lbs.)
					Suction (in.)	Liquid (in.)	
BCE5C18	208-230/60/1	7.5	40 VA Class 2	15X20	3/4	3/8	109
BCE5C24	208-230/60/1	10	40 VA Class 2	15X20	3/4	3/8	127
BCE5C30	208-230/60/1	15	40 VA Class 2	15X20	3/4	3/8	133
BCE5C36	208-230/60/1	15	40 VA Class 2	18X20	7/8	3/8	163
BCE5C42	208-230/60/1	15	40 VA Class 2	18x20	7/8	3/8	168
BCE5C48	208-230/60/1	20	40 VA Class 2	18x20	7/8	3/8	186
BCE5C60	208-230/60/1	20	40 VA Class 2	18x20	7/8	3/8	186

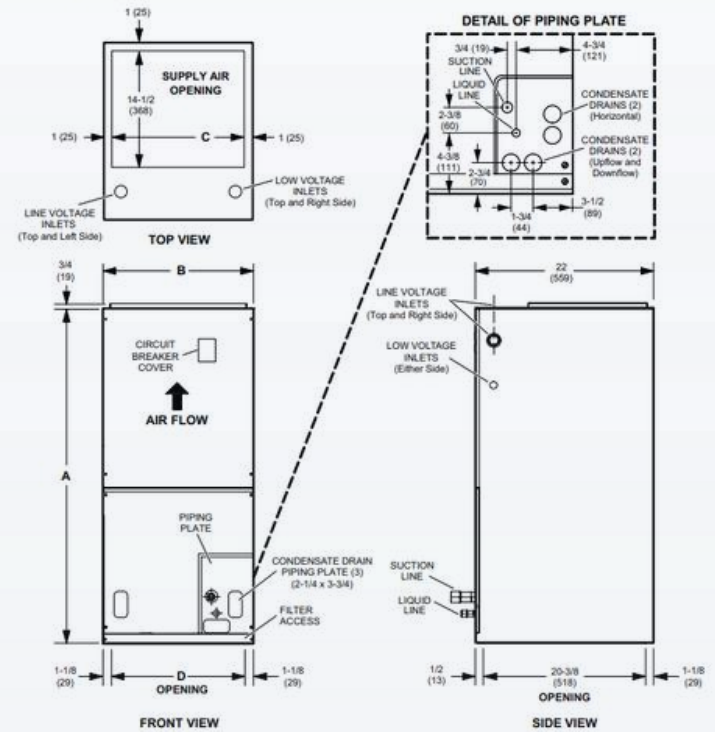
BCE5C COMPACT AIR HANDLER

MODEL NUMBER GUIDE

Dimension	18		24		30		36-42		48		60	
	in.	mm	in.	mm	in.	mm	in.	mm	in.	mm	in.	mm
A	43.5	1105	45.5	1156	47	1194	53.63	1362	55	1397	59.75	1518
B	18.5	470	18.5	470	18.5	470	21.5	546	21.5	546	21.5	546
C	16.5	419	16.5	419	16.5	419	19.5	495	19.5	495	19.5	495
D	16.25	413	16.25	413	16.25	413	19.25	489	19.25	489	19.25	489

All specifications and illustrations subject to change without notice and without incurring obligations.

UNIT DIMENSIONS - IN. (MM)



"Good" Concord Gas Horizontal Systems

Up to 17.0 Seer

Ton	AHRI							Condensing Unit			Gas Furnace			Cased Coil			TXV
	SEER	EER	Capacity (CAP)	SEER2	EER2	CAP2	AHRI Reference Number	Model Number		Price	Model Number		Price	Model Number		Price	Model Number
								D"	W"	H"	D"	W"	H"	D"	W"	H"	
2.0	17.80	14.50	24,000	16.60	13.50	23,600	209135036	4AC17L24P		\$ -	80G1UH045AE12		\$ -	EAH1P30A		\$ -	A4TXV01
								28.25	28.25	29	28.4	14.5	33	31.5	13	14.5	
2.5	16.80	14.00	30,000	16.00	13.50	29,000	209135427	4AC17L30P		\$ -	80G1UH045AE12		\$ -	EAH1P30A		\$ -	A4TXV01
								28.25	28.25	37	28.4	14.5	33	31.5	13	14.5	
3.0	16.20	13.50	36,000	15.20	12.50	35,000	209135962	4AC17L36P		\$ -	80G1UH070AE12		\$ -	EAH1P30A		\$ -	A4TXV02
								28.25	28.25	29	28.4	14.5	35	31.5	13	14.5	
3.5	16.80	14.00	42,000	15.60	13.00	42,000	209136886	4AC17L42P		\$ -	80G1UH090BE16		\$ -	EAH1P42B		\$ -	A4TXV02
								28.25	28.25	37	28.4	17.5	33	31.5	16	17.5	
4.0	15.10	12.70	48,000	14.70	12.20	46,500	209137426	4AC17L48P		\$ -	80G1UH090BE16		\$ -	EAH1P42B		\$ -	A4TXV02
								28.25	28.25	38	28.4	17.5	33	31.5	16	17.5	
5.0	15.00	12.50	58,500	14.30	12.00	56,500	209137730	4AC17L60P		\$ -	80G1UH090CE20		\$ -	EAH1P51C		\$ -	A4TXV03
								34.5	32.25	43	28.4	21	33	31.5	19.5	21	

All combinations shown come with a full 10 Year warranty on parts and compressor

"Good" Concord Gas Upflow Systems

Up to 17.0 Seer

Ton	AHRI							Condensing Unit			Gas Furnace			Cased Coil			TXV
	SEER	EER	Capacity (CAP)	SEER2	EER2	CAP2	AHRI Reference Number	Model Number		Price	Model Number		Price	Model Number		Price	Model Number
								D"	W"	H"	D"	W"	H"	D"	W"	H"	
2.0	17.60	14.50	24,000	16.60	13.50	23,600	209134929	4AC17L24P		\$ -	80G1UH045AE12		\$ -	EAC1P30A		\$ -	A4TXV01
								28.25	28.25	29	28.4	14.5	33	13	14.5	24.5	
2.5	16.80	14.00	29,200	16.00	13.00	28,800	209135314	4AC17L30P		\$ -	80G1UH045AE12		\$ -	EAC1P30A		\$ -	A4TXV01
								28.25	28.25	37	28.4	14.5	33	13	14.5	24.5	
3.0	16.40	13.50	36,000	15.60	13.00	35,600	209135806	4AC17L36P		\$ -	80G1UH070AE12		\$ -	EAC1P36A		\$ -	A4TXV02
								28.25	28.25	29	28.4	14.5	33	13	14.5	24.5	
3.5	16.40	13.50	41,500	15.60	13.00	41,500	209136770	4AC17L42P		\$ -	80G1UH090BE16		\$ -	EAC1P48B		\$ -	A4TXV02
								28.25	28.25	37	28.4	17.5	33	16	17.5	27.5	
4.0	15.00	12.20	47,500	14.70	12.20	46,000	209137343	4AC17L48P		\$ -	80G1UH090BE16		\$ -	EAC1P48B		\$ -	A4TXV02
								28.25	28.25	38	28.4	17.5	33	16	17.5	27.5	
5.0	15.10	12.50	59,000	14.70	12.20	58,000	209137708	4AC17L60P		\$ -	80G1UH090CE20		\$ -	EAC1P60C		\$ -	A4TXV03
								34.5	32.25	43	28.4	21	33	19.5	21	27.5	

All combinations shown come with a full 10 Year warranty on parts and compressor

"Good" Concord Electric Systems

Up to 17.0 Seer

AHRI								Condensing Unit			Air Handler			Heat Kit	TXV
Ton	SEER	EER	Capacity (CAP)	SEER2	EER2	CAP2	AHRI Reference Number	Model Number		Price	Model Number		Price	Model Number	Model Number
								D"	W"	H"	D"	W"	H"		
2.0	16.00	13.00	24,000	15.60	13.00	23,600	209410059	4AC17L24P		\$ -	BCE5C24MA1P		\$ -	ECBA25-5CB-P	A4TXV01
								28.25	28.25	29	18.5	16.5	45.5		
2.5	15.10	12.70	29,800	14.70	12.20	29,000	209410245	4AC17L30P		\$ -	BCE5C30MA1P		\$ -	ECBA25-10CB	A4TXV01
								28.25	28.25	37	18.5	16.5	47		
3.0	15.50	13.00	36,000	15.20	13.00	36,000	209410570	4AC17L36P		\$ -	BCE5C36MA1P		\$ -	ECBA25-10CB	A4TXV01
								28.25	28.25	29	21.5	19.5	53.63		
3.5	15.10	12.70	42,000	14.40	12.20	42,000	209410634	4AC17L42P		\$ -	BCE5C42MA1P		\$ -	ECBA25-15CB	A4TXV02
								28.25	28.25	37	21.5	19.5	53.63		
4.0	14.80	12.20	48,000	14.40	12.00	46,500	209410693	4AC17L48P		\$ -	BCE5C48MA1P		\$ -	ECBA25-15CB	A4TXV02
								28.25	28.25	38	21.5	19.5	55		
5.0	14.50	11.70	57,500	13.80	11.70	56,000	209410780	4AC17L60P		\$ -	BCE5C48MA1P		\$ -	ECBA25-20CB	A4TXV02
								34.5	32.25	43	21.5	19.5	55		
5.0	14.50	12.20	58,500	13.80	12.00	57,500	209410781	4AC17L60P		\$ -	BCE5C60MA1P		\$ -	ECBA25-20CB	A4TXV03
								34.5	32.25	43	21.5	19.5	59.75		

All combinations shown come with a full 10 Year warranty on parts and compressor

"Better" Concord Gas Horizontal Systems

Up to 17.5 Seer

Ton	AHRI							Condensing Unit			Gas Furnace			Cased Coil			TXV Model Number
	SEER	EER	Capacity (CAP)	SEER2	EER2	CAP2	AHRI Reference Number	Model Number		Price	Model Number		Price	Model Number		Price	
	D"	W"	H"	D"	W"	H"	D"	W"	H"	D"	W"	H"					
2.0	17.40	14.00	24,000	16.40	13.50	23,600	209135070	4AC17L24P		\$ -	96G2UH070BV12		\$ -	EAH1P36B		\$ -	A4TXV01
								28.25	28.25	29	28.5	17.5	33	26.5	16	17.5	
2.5	16.40	13.50	29,200	15.40	13.00	28,600	209135469	4AC17L30P		\$ -	96G2UH070BV12		\$ -	EAH1P36B		\$ -	A4TXV01
								28.25	28.25	37	28.5	17.5	33	26.5	16	17.5	
3.0	16.60	13.50	36,000	15.80	13.00	36,000	209136060	4AC17L36P		\$ -	96G2UH070BV12		\$ -	EAH1P42B		\$ -	A4TXV02
								28.25	28.25	29	28.5	17.5	33	31.5	16	17.5	
3.5	16.20	13.50	42,000	15.40	13.00	42,000	209136947	4AC17L42P		\$ -	96G2UH090CV20		\$ -	EAH1P51C		\$ -	A4TXV02
								28.25	28.25	37	28.5	21	33	31.5	19.5	21	
4.0	15.00	12.20	48,000	14.40	12.00	47,000	209137473	4AC17L48P		\$ -	96G2UH090CV20		\$ -	EAH1P51C		\$ -	A4TXV02
								28.25	28.25	38	28.5	21	33	31.5	19.5	21	
5.0	14.50	12.00	57,500	13.80	11.50	57,500	209137728	4AC17L60P		\$ -	96G2UH090CV20		\$ -	EAH1P51C		\$ -	A4TXV03
								34.5	32.25	43	28.5	21	33	31.5	19.5	21	

All combinations shown come with a full 10 Year warranty on parts and compressor

"Better" Concord Gas Upflow Systems

Up to 17.5 Seer

AHRI								Condensing Unit			Gas Furnace			Cased Coil			TXV
Ton	SEER	EER	Capacity (CAP)	SEER2	EER2	CAP2	AHRI Reference Number	Model Number		Price	Model Number		Price	Model Number		Price	Model Number
								D"	W"	H"	D"	W"	H"	D"	W"	H"	
3.0	16.40	13.50	36,000	15.60	13.00	36,000	209135847	4AC17L36P		\$ -	96G2UH070BV12		\$ -	EAC1P48B		\$ -	A4TXV02
								28.25	28.25	29	28.5	17.5	33	17.5	16	27.5	
3.5	16.60	14.00	42,000	15.60	13.00	42,000	209136854	4AC17L42P		\$ -	96G2UH090CV20		\$ -	EAC1P60C		\$ -	A4TXV02
								28.25	28.25	37	28.5	21	33	21	19.5	27.5	
4.0	15.40	12.70	48,000	14.70	12.20	48,000	209137401	4AC17L48P		\$ -	96G2UH090CV20		\$ -	EAC1P60C		\$ -	A4TXV02
								28.25	28.25	38	28.5	21	33	21	19.5	27.5	
5.0	14.50	12.20	59,500	13.80	11.70	58,500	209137706	4AC17L60P		\$ -	96G2UH090CV20		\$ -	EAC1P60C		\$ -	A4TXV03
								34.5	32.25	43	28.5	21	33	21	19.5	27.5	

All combinations shown come with a full 10 Year warranty on parts and compressor

"Better" Concord Electric Systems

Up to 17.5 Seer

AHRI								Condensing Unit			Air Handler			Heat Kit		TXV
Ton	SEER	EER	Capacity (CAP)	SEER2	EER2	CAP2	AHRI Reference Number	Model Number		Price	Model Number		Price	Model Number	Price	Model Number
								D"	W"	H"	D"	W"	H"			
2.0	17.60	14.50	24,000	16.60	13.50	24,000	209439631	4AC17L24P		\$ -	BCE5E24MA4X		\$ -	ECBA25-5CB-P	\$ -	N/A
								28.25	28.25	29	18.5	16.5	45.5			
2.5	16.80	14.00	30,000	15.60	13.00	29,200	209410247	4AC17L30P		\$ -	BCE5E30MA4X		\$ -	ECBA25-10CB	\$ -	N/A
								28.25	28.25	37	18.5	16.5	47			
3.0	16.60	13.50	36,000	15.60	13.00	36,000	209410422	4AC17L36P		\$ -	BCE5E36MA4X		\$ -	ECBA25-10CB	\$ -	N/A
								28.25	28.25	29	21.5	19.5	53.63			
3.5	16.20	13.50	42,000	15.20	12.50	42,000	209439636	4AC17L42P		\$ -	BCE5E42MA4X		\$ -	ECBA25-15CB	\$ -	N/A
								28.25	28.25	37	21.5	19.5	53.63			
4.0	15.00	12.20	48,000	14.40	12.00	46,500	209410696	4AC17L48P		\$ -	BCE5E48MA4X		\$ -	ECBA25-15CB	\$ -	N/A
								28.25	28.25	38	21.5	19.5	55			
5.0	14.50	12.20	58,500	13.80	12.00	57,500	209410783	4AC17L60P		\$ -	BCE5E60MA4X		\$ -	ECBA25-20CB	\$ -	N/A
								34.5	32.25	43	21.5	19.5	59.75			

All combinations shown come with a full 10 Year warranty on parts and compressor

"Best" Concord Lynx Heat Pump Gas Horizontal Systems

Up to 20.0 Seer

AHRI								Condensing Unit			Gas Furnace			Cased Coil			TXV
Ton	SEER	EER	Capacity (CAP)	CAP 47 Degrees	CAP 17 Degrees	SEER2	AHRI Reference Number	Model Number		Price	Model Number		Price	Model Number		Price	Model Number
								D"	W"	H"	D"	W"	H"	D"	W"	H"	
2.0	20.00	13.00	24,000	24,000	15,300	N/A	206906491	4HP18V36P		\$ -	96G2UH070BV12		\$ -	EAH1P30B		\$ -	A4TXV01
								31.25	29.4	33.75	28.5	17.5	33	26.5	16	17.5	
2.0	18.50	13.00	24,000	24,000	15,200	N/A	206906473	4HP18V36P		\$ -	80G1UH045AE12		\$ -	EAH1P30A		\$ -	A4TXV01
								31.25	29.4	33.75	28.4	14.5	33	31.5	13	14.5	
3.0	19.00	11.50	33,000	34,000	22,200	N/A	206906509	4HP18V36P		\$ -	96G2UH070BV12		\$ -	EAH1P36B		\$ -	A4TXV02
								31.25	29.4	33.75	28.5	17.5	33	26.5	16	17.5	
4.0	16.50	11.00	46,000	47,000	30,600	N/A	206907139	4HP18V60P		\$ -	96G2UH090CV20		\$ -	EAH1P48C		\$ -	A4TXV02
								31.25	29.4	43.75	28.5	21	33	26.5	19.5	21	
4.0	16.50	11.00	46,500	45,500	28,600	N/A	207168238	4HP18V60P		\$ -	80G1UH090BE16		\$ -	EAH1P42B		\$ -	A4TXV02
								31.25	29.4	43.75	28.4	17.5	33	31.5	16	17.5	
5.0	15.50	10.00	57,500	56,000	36,800	N/A	206907152	4HP18V60P		\$ -	96G2UH090CV20		\$ -	EAH1P51C		\$ -	A4TXV03
								31.25	29.4	43.75	28.5	21	33	31.5	19.5	21	

All combinations shown come with a full 10 Year warranty on parts and compressor

Special Order Only - Non-Stock Item

"Best" Concord Lynx Heat Pump Gas Upflow Systems

Up to 20.0 Seer

AHRI								Condensing Unit			Gas Furnace			Cased Coil			TXV
Ton	SEER	EER	Capacity (CAP)	CAP 47 Degrees	CAP 17 Degrees	SEER2	AHRI Reference Number	Model Number		Price	Model Number		Price	Model Number		Price	Model Number
								D"	W"	H"	D"	W"	H"	D"	W"	H"	
2.0	20.00	13.00	23,800	24,000	15,400	N/A	206906328	4HP18V36P		\$ -	96G2UH070BV12		\$ -	EAC1P30B		\$ -	A4TXV01
								31.25	29.4	33.75	28.5	17.5	33	17.5	16	22.5	
2.0	17.50	13.00	24,000	24,000	15,500	N/A	206906310	4HP18V36P		\$ -	80G1UH045AE12		\$ -	EAC1P30A		\$ -	A4TXV01
								31.25	29.4	33.75	28.4	14.5	33	14.5	13	22.5	
3.0	17.50	10.50	34,200	34,000	22,400	N/A	206906369	4HP18V36P		\$ -	96G2UH070BV12		\$ -	EAC1P48B		\$ -	A4TXV02
								31.25	29.4	33.75	28.5	17.5	33	17.5	16	27.5	
4.0	16.00	11.00	44,500	46,000	31,000	N/A	206907019	4HP18V60P		\$ -	96G2UH090CV20		\$ -	EAC1P48C		\$ -	A4TXV02
								31.25	29.4	43.75	28.5	21	33	21	19.5	27.5	
4.0	15.50	11.00	44,500	46,000	30,800	N/A	206907002	4HP18V60P		\$ -	80G1UH090BE16		\$ -	EAC1P48B		\$ -	A4TXV02
								31.25	29.4	43.75	28.4	17.5	33	17.5	16	27.5	
5.0	16.00	10.00	58,000	57,000	37,800	N/A	206907057	4HP18V60P		\$ -	96G2UH090CV20		\$ -	EAC1P60C		\$ -	A4TXV03
								31.25	29.4	43.75	28.5	21	33	21	19.5	27.5	

All combinations shown come with a full 10 Year warranty on parts and compressor

Special Order Only - Non-Stock Item

"Best" Concord Lynx Heat Pump Electric Systems

Up to 20.0 Seer

AHRI								Condensing Unit			Air Handler			Heat Kit		TXV			
Ton	SEER	EER	Capacity (CAP)	CAP 47 Degrees	CAP 17 Degrees	SEER2	AHRI Reference Number	Model Number			Price			Model Number	Price	Model Number			
								D"	W"	H"	D"	W"	H"						
2.0	20.00	13.00	23,800	24,000	15,900	N/A	206906229	4HP18V36P			\$ -			BCE5V24M	\$ -		ECBA25-5CB-P	\$ -	N/A
								31.25	29.4	33.75	16.5	18.5	45.5	5KW					
2.0	20.00	13.00	24,000	24,000	15,600	N/A	206906224	4HP18V36P			\$ -			BCE5E24MA4X	\$ -		ECBA25-5CB-P	\$ -	N/A
								31.25	29.4	33.75	18.5	16.5	45.5	5KW					
3.0	19.50	12.00	34,600	33,800	21,400	N/A	206905447	4HP18V36P			\$ -			BCE5V36M	\$ -		ECBA25-10CB	\$ -	N/A
								31.25	29.4	33.75	19.5	21.5	53.63	10KW					
3.0	19.00	11.50	34,600	33,400	21,800	N/A	206906226	4HP18V36P			\$ -			BCE5E36MA4X	\$ -		ECBA25-10CB	\$ -	N/A
								31.25	29.4	33.75	21.5	19.5	53.63	10KW					
4.0	17.00	11.00	45,500	46,000	30,800	N/A	206906986	4HP18V60P			\$ -			BCE5V48M	\$ -		ECBA25-15CB	\$ -	N/A
								31.25	29.4	43.75	19.5	21.5	55	15KW					
4.0	16.50	11.00	45,500	46,000	30,800	N/A	206906984	4HP18V60P			\$ -			BCE5E48MA4X	\$ -		ECBA25-15CB	\$ -	N/A
								31.25	29.4	43.75	21.5	19.5	55	15KW					
5.0	16.50	10.00	55,500	55,500	37,400	N/A	206906605	4HP18V60P			\$ -			BCE5V60M	\$ -		ECBA25-20CB	\$ -	N/A
								31.25	29.4	43.75	19.5	21.5	59.75	20KW					
5.0	16.00	10.00	55,000	55,500	37,800	N/A	206906985	4HP18V60P			\$ -			BCE5E60MA4X	\$ -		ECBA25-20CB	\$ -	N/A
								31.25	29.4	43.75	21.5	19.5	59.75	20KW					

All combinations shown come with a full 10 Year warranty on parts and compressor

Special Order Only - Non-Stock Item